



BEAUSOLEIL DAY CARE CENTRE

2024-2025



BEAUSOLEIL DAY CARE CENTRE

Beausoleil Day Care Centre has been providing child care services to the community of Christian Island since July 1976. Our centre is committed to offering high quality child care programs.

Beausoleil Day Care Centre program is staffed with fully qualified Registered Early Childhood Educators, and Assistants who provide the best possible program for each child.

Beausoleil Day Care Centre meets all regulations and standards as determined by the Ministry of Education in accordance with the Child Care & Early Years Act (CCEYA, 2014) and the College of Early Childhood Educators. All program staff members possess a valid First Aid/CPR, updated immunization and a Police Record Check, including a Vulnerable Sector Check.

BEAUSOLEIL DAY CARE CENTRE

The Beausoleil Day Care Centre program is a child-focused environment. We aim to make children feel comfortable in the environment by learning through play. The goals to guide programming and pedagogy include:

- Bringing in community partners to support the children, families and staff
- Provide an on-going professional development experience for staff
- Promote children's exploration through play and inquiry
- Support positive interactions between children, staff and families
- Promote the health, safety, nutrition and well-being of children
- Encourage children to interact and communicate in a positive way and support their ability to self-regulate
- Provide an enjoyable environment for the children to learn and develop
- Provide a variety of indoor and outdoor learning experiences
- Considering the unique needs of children receiving child care through rest and quiet time
- Provide a quiet space for rest or alone time
- Provide an open policy for parent/guardians to be apart of the program
- Provide child initiated and adult-supported programming
- Observe and document child's interests and development
- Promote culture, and the daily use of Anishinaabemowin

OUR STAFF



MARISA MONAGUE, RECE

BEAUSOLEIL DAY CARE CENTRE SUPERVISOR

- Hired at Beausoleil Day Care Centre in 2010
- Transitioned from Relief ECEA Staff to full-time RECE Staff through contracts
- Became Assistant Supervisor in 2018
- Promoted to Supervisor in 2019 under the mentorship of Tina Sandy
- Through various roles, I have gained valuable experience and aim to deliver top-notch child care to our community, focusing on children's well-being and development during their formative years while incorporating Anishinaabemowin and culture.



MASON GRAHAM, RECE

PRESCHOOL ROOM TEACHER

BEAUSOLEIL DAY CARE CENTRE ASSISTANT SUPERVISOR

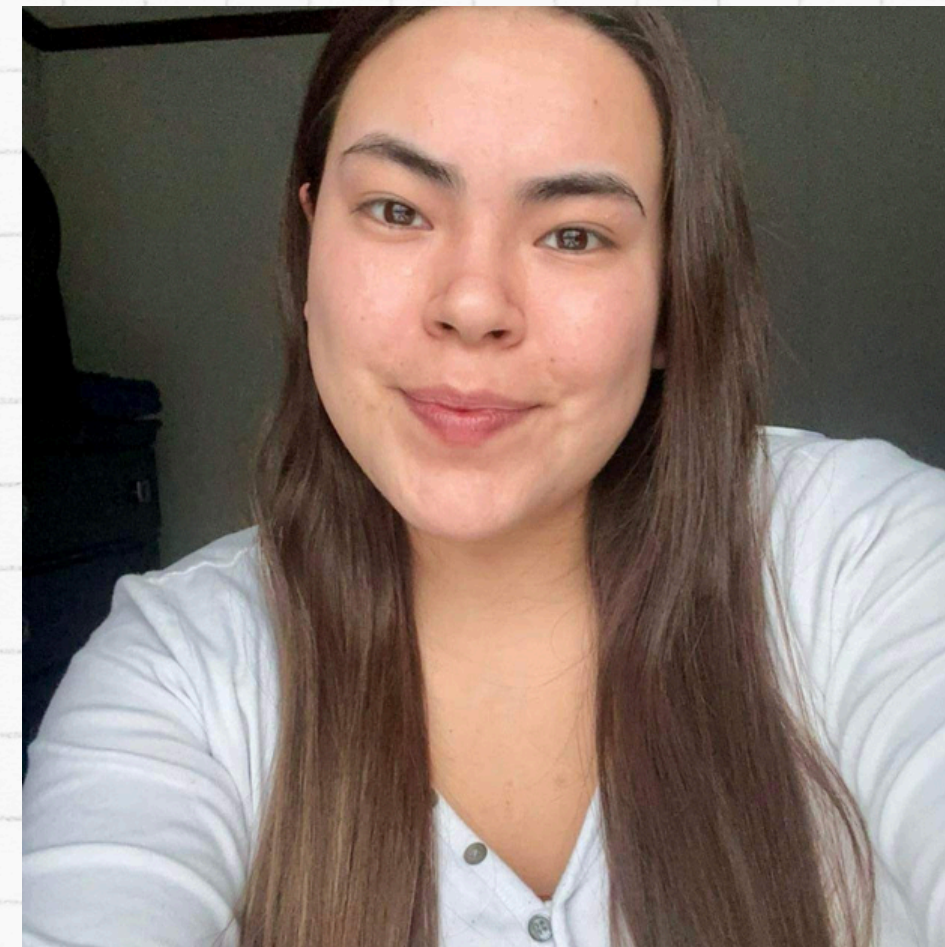
- Hired at Beausoleil Day Care Centre in April 2021 as a RECE and Assistant Supervisor
- 14 years of working experiencing in a child care setting (4 as ECEA, 2 as Director Approved Room Lead, 8 as an RECE)
- Completed ECE Program at Cambrian College
- Through holding different roles in a child care setting throughout the years, I have gained the experience needed to ensure that the children of Beausoleil First Nation have a safe and fun learning environment where they learn through their play, their interest, and their culture.

OUR STAFF



MARIAH SANDY-MONAGUE, DA-ECE
TODDLER ROOM TEACHER

- Employed at Beausoleil Daycare Centre for 7 years. I have worked in both the preschool and toddler classrooms under many great mentors.
- Currently a director approved Early Childhood Educator
- Entering final year of ECE diploma with Canadore College through FNTI in September and will graduate January 2025. A
- After graduation I will be able to apply and register with the College of Early Childhood Educators.



TIFFANY CASS, DA-ECE
TODDLER ROOM TEACHER

Hello my name is Tiffany, I have been employed at BDCC as an ECE assistant for 5 going on 6 years.

During my time here, I've had the privilege of working with some amazing children and dedicated colleagues. Each day brings new challenges and opportunities for growth, both for the kids and for myself. I've learned so much about early childhood education and the profound impact we can have on young minds.

In addition to my role as an ECE assistant, I have pursued further training and professional development to enhance my skills. I believe that continuous learning is essential in providing the best care and education for our little ones. I am passionate about creating a nurturing and stimulating environment where children feel safe, valued, and excited to learn.

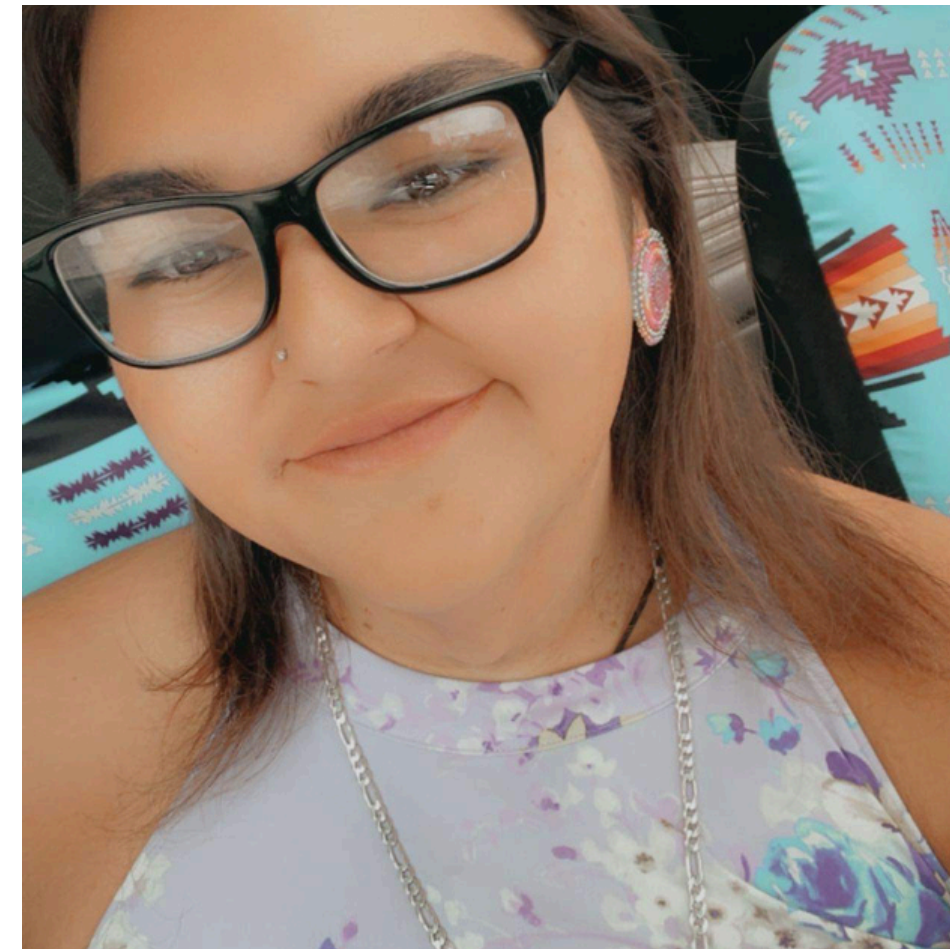
OUR STAFF



MACKAYLA SUNDAY, DA-ECE

PRESCHOOL ROOM

Hello, my name is Mackayla Sunday, and I have been employed at Beausoleil Daycare Centre as an ECE assistant since November 2022. Prior to this role, I completed a summer placement from May to August 2022. My responsibilities have spanned across toddler and preschool rooms, driven by my enthusiasm for nurturing young minds. My future plan is to pursue further education to become a registered ECE professional.



RUTH-ANNE WEAYMOUTH

ANISHINAABEMOWIN KINOMAAGEWIN

BDCC & MNA SUPPORT

Aaniin, my name is Ruth-Anne Weaymouth, I have been a part of the Beausoleil Daycare Center and Mna Bmaadzijig since May of 2022. My goal within the daycare is to start introducing the ojibwe language and culture to our children, interchanging english words with ojibwe. At mna my goal is to reinforce what our kids are learning from the school. With both programs we smudge each day. My future plans are to attend more cultural workshops, language classes and conferences to better my language skills to bring back to our children and strengthen their language.

OUR STAFF



THERESA COPEGOG
COOK

- I have served at the Beausoleil Day Care Centre for over 16 years, offering services that include providing breakfast (if required), a morning snack, lunch, and an afternoon snack.



MURRAY SYLVESTER
CUSTODIAN

- Employed at Beausoleil Day Care Centre since July 2021
- Extensive background in building maintenance
- Abundant expertise in various skilled trades

OUR STAFF

CURRENTLY ON MATERNITY LEAVE



**Karissa Thomas-Monague,
DA-ECEA**

I am Karissa Thomas-Monague, currently on maternity leave and planning to return in December 2024. I have been at Beausoleil Day Care Centre since late Fall 2017, starting as a relief education assistant worker, then becoming a Director Approved Early Childhood Educator in Summer 2021. I have worked in classrooms under Tina Sandy and Jocelyn Jamieson. Additionally, I have 4 credits in the ECE FNTI program with Canadore College, working towards my degree.



**Darian Roote,
DA-ECEA**

Hello, my name is Darian Roote. I've worked at Beausoleil Daycare Centre for 4 years as an ECE assistant, fulfilling my dream of working with children. I've worked in toddler and preschool rooms with great coworkers. Currently on maternity leave, planning to return in summer 2025 to pursue becoming a registered early childhood educator.

INTERNAL ORGANIZATIONAL CHART FOR CHILDCARE -ACRONYMS-

- RECE- Registered Early Childhood Educator
 - RC- Resource Consultant
- SNRT/EI- Special Needs Resource Teacher/Early Interventionist
- DAECE- Director Approved Early Childhood Educator
 - EA- Educational Assistant



RECE AND DAECE- BOTH ROLES ARE MINISTRY APPROVED TO SUPPORT CHILDREN WITHIN CHILDCARE.

(WAGE GRIDS WOULD DIFFER)

RECE Qualifications

- Diploma in Early Childhood Education from an accredited institution
- Registry to the College of Early Childhood Educators of Ontario
- Valid First Aid & CPR
- CPIC/VSS

**In order to maintain registry a series of requirements are needed to maintain good status title within the college.

DAECE Qualifications

**in order to be at same level as an RECE

- Working towards Early Childhood Education diploma
- Certification in standard first aid training, including infant and child CPR
- required to obtain VSCs in accordance with the CCEYA from staff and other persons who are interacting with children on premises
- Connect to the CLL(Community Learning Library) and complete all offered Modules.
- Attends all Professional Development opportunities.
- Maintains a work portfolio of all certificates and training flyers.

FOUR FOUNDATIONS OF LEARNING

HOW DOES LEARNING HAPPEN?

(ONTARIO MINISTRY OF EDUCATION (OMED), 2014B,

01. *BELONGING*

Every child has a sense of belonging when he or she is connected to others and contributes to their world

03. *ENGAGEMENT*

Every child is an active and engaged learner who explores the world with body, mind, and senses.

02. *WELL-BEING*

Every child is developing a sense of self, health, and well-being.

04. *EXPRESSION*

Every child is a capable communicator who expresses himself or herself in many ways.

BEAUSOLEIL DAY CARE CENTRE
PROGRAM AND STAFF TO
CULTIVATE AUTHENTIC, CARING
RELATIONSHIPS AND CONNECTIONS
TO CREATE A SENSE OF BELONGING
AMONG AND BETWEEN CHILDREN,
ADULTS, AND THE WORLD AROUND
THEM.

BEAUSOLEIL DAY CARE CENTRE
PROGRAM AND STAFF TO
NURTURE CHILDREN'S HEALTHY
DEVELOPMENT AND SUPPORT
THEIR GROWING SENSE OF SELF.

BEAUSOLEIL DAY CARE CENTRE
PROGRAM AND STAFF TO
PROVIDE
ENVIRONMENTS AND
EXPERIENCES TO ENGAGE
CHILDREN IN ACTIVE, CREATIVE,
AND MEANINGFUL EXPLORATION,
PLAY, AND INQUIRY.

HOW DOES LEARNING HAPPEN?

GOALS FOR PROGRAMMING

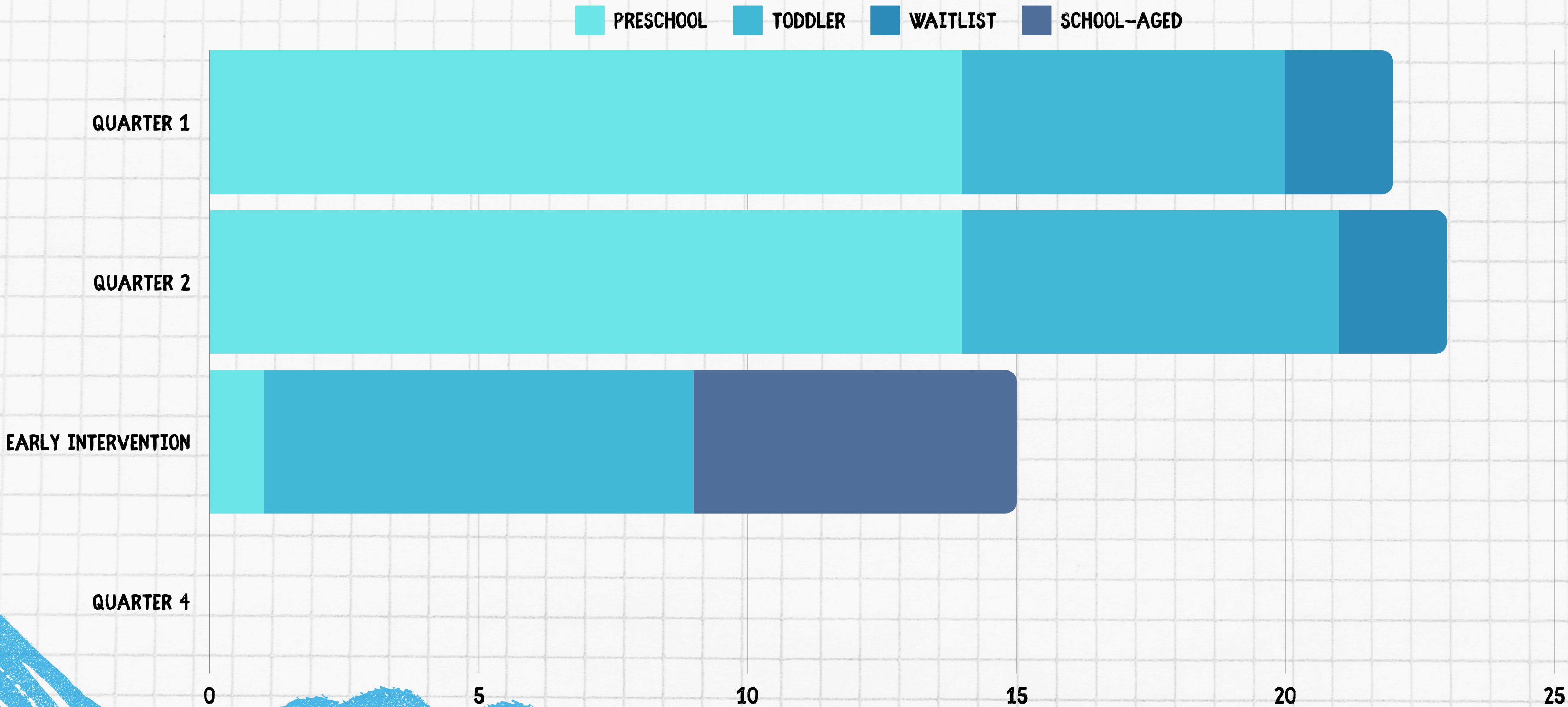
BEAUSOLEIL DAY CARE
CENTRE STAFF AND
PROGRAMS TO FOSTER
COMMUNICATION AND
EXPRESSION IN ALL
FORMS.

DISCOVER THE UNIQUE CHARACTERISTICS AND
GIFTS OF EACH CHILD BY TALKING WITH THEIR
FAMILY, OBSERVING, AND DOCUMENTING (E.G., IN
ADDITION TO WHAT THE CHILDREN ARE
INTERESTED IN, NOTICE WHAT BRINGS THEM JOY
AND HOW THEY RELATE TO OTHERS AND TO THE
ENVIRONMENT AROUND THEM; TO SUPPORT
INCLUSION,).

PARTICIPATING IN PROFESSIONAL
LEARNING AND CONNECTING WITH
COMMUNITY PARTNERS TO ENSURE
THE PROGRAM FOSTERS SOCIAL AND
EMOTIONAL WELL-BEING AND
RESILIENCE FOR CHILDREN AND
FAMILIES

PROGRAM STATS

BEAUSOLEIL DAY CARE CENTRE PROGRAM





COMMUNITY INVOLVEMENT

EVENTS BEAUSOLEIL DAY CARE CENTRE SUPPORTS:

- Traditional Parenting Workshops
- Building Quality Relationship Workshops
- Family Retreats/Family Outings
- Picture Day (Recently brought back into program)
- Developmental Check-In Days -- Opportunity for families to complete Ages & Stages Questionnaire/ERIK Screening Tool
- Holiday Parties (Halloween/Christmas)
- Family Literacy Challenges
- Community Events --> Winterfest, Achievement Day, National Indigenous Peoples Day
- Fairy Tale Ball
- Classroom Spirit Days
- Supporting Kindergarten Registration
- Getting Ready for Kindergarten Program
- Nookmis/Mishomis Program (NEW!) *Partnered with Beausoleil Parent/Child Resource Programming
- Moccassin Workshops
- Ribbon Shirt/Ribbon Skirt Shops
- Caribou Tufting Workshops (Coming Soon!)
- Preschool Graduation
- Professional Development Opportunities for Staff
- Children's Supports Network Meeting (w/ Community Programs BFN Child & Family Services, Parent Child Resource Centre, Community Wellness, Jordan's Principle, etc.,)



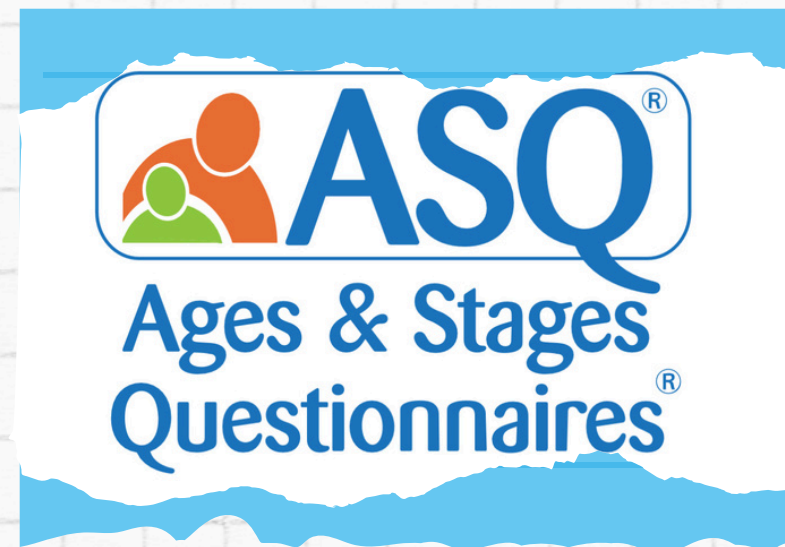
EARLY INTERVENTION SERVICES

The BFN Early intervention program provides a family centred approach that supports children 0-6 years of age who may have developmental support needs. Services can include Speech and Language, Occupational Therapy, Communicative Disorders Assistant, Physiotherapy, Special Needs Resource Teacher, and Resource Consultation Services.

Children and families can receive services within the childcare, community programming, at the school, or in office.



SCREENING TOOLS AND DEVELOPMENTAL QUESTIONNAIRES USED IN OUR PROGRAM



AGES AND STAGES QUESTIONNAIRES
ASQ 3, ASQ SE 2 SOCIAL EMOTIONAL
THIS TOOL IDENTIFIES THE
STRENGTHS AND DEVELOPMENTAL
DOMAINS, THAT NEED TO BE
MONITORED OR NEED ACTIVE
SUPPORT.



ERIK EARLY REFERRAL
IDENTIFICATION KIT THIS IS
A TOOL THAT IDENTIFIES
WHAT SERVICES THE CHILD
NEEDS. (SLP, OT, PT, RC)



CDC DEVELOPMENTAL
MILESTONES
A QUICK REFERENCE CHECKLIST THAT
PARENTS AND CAREGIVERS CAN DO TO
MONITOR THEIR CHILD'S DEVELOPMENT.

EARLY INTERVENTION TEAM



LYNDA HOKSBERGEN, B.A. SC, RECE
INDIGENOUS SERVICES COORDINATOR

I am currently in the role as an Indigenous Early Intervention Services Coordinator where I support and advocate for Early Intervention supports and create frameworks that are family centered and assist children in reaching developmental milestones while gaining access to meaningful services. I currently support First Nations and Urban Indigenous communities throughout the County of Simcoe.



JALNA CROTTY, RECE
INDIGENOUS RESOURCE CONSULTANT

My name is Jalna Crotty, and I am the Indigenous Resource Consultant with CLH in the Simcoe County Resource Consultation Services program. You may see me in your child's classroom throughout the year. My role as a Resource Consultant is to provide developmental support and strategies to families. I also share information that is culturally relevant to families. In addition, I provide support to the Junior Kindergarten, Senior Kindergarten, Grade one, and Mna programs, to create a warm, supportive learning environment that is responsive to the children's needs.

SPECIAL NEEDS RESOURCE TEACHER/ EARLY INTERVENTIONIST

QUALIFICATIONS:

- Preferred:
- RECE and in good standing status with the CECE(College of Early Childhood Educators).
 - Or Post secondary in relatable field.
 - Experience working with families and children with special needs
 - A willingness to pursue further education in child development.

ROLES:

Reporting to the Childcare Supervisor, this professional will provide support to young children with diverse needs and their families.

SNRT/EI support can be provided in childcare, Mna Bmaadzijig, and JK to grade 1.

SNRT/EI to complete developmental screening such as the ERIK(Early Referral Identification Kit) and ASQ (Ages and Stages Questionnaire).

Attend all SLP, OT, CDA meetings.

RESPONSIBILITIES:

- Assisting families in developing a DSP (Developmental Support Plan) based on the child's and the family's needs
- Provide consultation support to childcare, Mna Bmaadzijig, and JK-Grade 1 classrooms.
 - Designing and implementing individual programs based on the DSP
 - Accessing and coordinating appropriate services within the use of the CTN Shared electronic Shared record.
 - Promoting a positive image of BFN Early Intervention Services within the community
 - The SNRT/EI will work as a member of the family's transdisciplinary team, carry out specific administrative duties and attend case conferences

EARLY INTERVENTION PROGRAM SERVICE PROVIDERS:

CLH Developmental Support Services Resource Consultant

The Resource Consultant offers an array of supports.

These include:

- DSP(Developmental Support Plan)
- Consultation in Childcare, classroom or in community settings.
- Transition to School
- Funding applications
- Referrals
- Adaptable strategies based on immediate needs of the child.

RVH Communicative Disorders Assistant

The Communicative Disorders Assistant works under the supervision of the Speech-Language Pathologist. Coaching sessions are based on goals set out by the Speech-Language Pathologist and the parents.

OSMH

Physiotherapy

Orillia Soldiers Memorial offers formal assessments and strategies that support the child and family in learning new skills that may be needed to improve their child's movement.
(sitting, crawling, walking, jumping)

RVH Speech and Language Services

The Royal Victoria Hospital Preschool Speech and Language Services provides formal assessments and strategies that support the child in all aspects of Communication.

Orillia Soldiers Memorial. Hospital Occupational Therapy

OT services help a child to develop the skills needed so that activities are easier at home and in the community. Areas of support include: Fine, Gross motor skills, self regulation, and self care.

Special Needs Resource Teacher

The BFN Special Needs Resource Teacher provides one to one support within the childcare and classroom setting. Creation of developmental support plans, documentation on the CTN Shared electronic record and strategies on development are provided.

The background is a light gray grid. The text is centered. There are several hand-drawn colorful shapes around the text: a pink shape at the top left, a yellow shape at the top left, a blue shape at the top center, a pink shape at the top right, a green shape at the top right, a blue spiral at the top right, a yellow shape at the middle right, a pink shape at the middle right, a blue shape at the bottom left, a green shape at the bottom left, a yellow flower at the bottom center, a pink shape at the bottom right, and a pink shape at the bottom right.

**GCHI-
MIIGWECH**